



STORE

it

STORAGE SOLUTIONS
ISSUE #4

**WORKSHOP
PRODUCTS**

 **DEXION**

Smarter thinking



**Welcome to the latest Store It catalogue,
from Dexion.**

**As you'll see, it's jam packed with all things Dexion.
For your warehouse, for your workshop, or for your
office.**

All in a practical, no-nonsense, here's-the-facts way.

**Why call it Store It? Well, for practically anything you
can think of, in here you'll find the best way to, well,
store it.**

**And how should you use it? Flick through it, for a
grand overview of our collection.**

**Order from it. And, keep it (store it, you
could say).**

**If, by chance, something you want is not in here,
please call us or visit our website.**

 **DEXION**[®]
Smarter thinking.

Our Locations

Dexion Head Office Locations

AUSTRALIA

Dexion Australia Pty Limited

Building E3
22 Powers Road
SEVEN HILLS NSW 2147

☎ 1800 100 050

🌐 dexion.com.au

CHINA

Dexion (Shanghai) Logistics Equipment Ltd.

Room 1102, Block A, Phase 1
Zhang Jiang Riverfront Harbour
Longdong Avenue, Pudong New Area
Shanghai 201203, P.R. China

☎ +86 6879 4412

🌐 dexion-china.com

HONG KONG

Dexion Asia Limited

6/F Mtl. Building, Phase 2
Berth 1, Container Port Road
Kwai Chung, N.T Hong Kong

☎ +85 2 2410 8383

MALAYSIA

Dexion Asia Sdn Bhd

MR2-01-01 Sri Acappella
Jalan Lompat Tinggi 13/33 Seksyen 13,
40100 Shah Alam, Selangor,
Darul Ehsan, Malaysia

☎ +603 5520 6000

🌐 dexion.biz

NEW ZEALAND

Dexion New Zealand Limited

423 East Tamaki Road
East Tamaki, Auckland 2013
New Zealand

☎ 0800 339 466

🌐 dexion.co.nz

SINGAPORE

Dexion Asia Pte Ltd

2 Loyang Way 1
Singapore 50870

☎ +65 6545 5454

🌐 dexion.biz

Our Locations

Asia - Regional HQ

Dexion Asia Sdn Bhd

MR2-01-01 Sri Acappella
Jalan Lompat Tinggi 13/33 Seksyen 13,
40100 Shah Alam, Selangor,
Darul Ehsan, Malaysia
☎ +603 5520 6000
🌐 dexion.biz

South East Asia

Brunei
Cambodia
Indonesia

Laos
Malaysia
Philippines

Singapore
Thailand
Vietnam

South Asia

India

Pakistan

Sri Lanka

North Asia

Japan

Korea

Taiwan

Our Supply Centres

Australia

ACT

Dexion Canberra

34 Yass Road
QUEANBEYAN ACT 2620

☎ 02 9239 1414

🌐 dexioncanberra.com.au

NSW

Dexion Alexandria

35A Heathcote Road
MOOREBANK NSW 2170

☎ 02 9319 3120

🌐 dexionalexandria.com.au

Dexion Liverpool

35A Heathcote Road
MOOREBANK NSW 2170

☎ 02 9600 8443

🌐 dexionliverpool.com.au

Dexion Nepean

Unit 3, 7 Millner Ave
HORLSEY PARK NSW 2175

☎ 02 9623 3399

🌐 dexionnepean.com.au

Dexion Newcastle

7 Templar Place
BENNETTS GREEN NSW 2290

☎ 02 4904 0200

🌐 dexionnewcastle.com.au

Dexion Seven Hills

1 Tyrone Place
ERSKINE PARK NSW 2759

☎ 02 9838 7770

🌐 dexionsevenhills.com.au

Dexion Silverwater

Unit 3, 7 Millner Ave
HORLSEY PARK NSW 2175

☎ 02 9737 0644

🌐 dexionsilverwater.com.au

Dexion System Services

150 Bungaree Road
PENDLE HILL NSW 2145

☎ 02 8259 0367

🌐 dexionssystemservices.com.au

QLD

Dexion Acacia Ridge

373 Bradman Street
ACACIA RIDGE QLD 4110

☎ 07 3711 7288

🌐 dexionacaciaridge.com.au

Dexion Cairns

240 Hartley Street
CAIRNS QLD 4870

☎ 07 4035 1444

🌐 dexionacaciaridge.com.au

Dexion Gold Coast

Unit 7 / 39 Nerang Street
NERANG QLD 4211

☎ 07 5556 0655

🌐 dexiongoldcoast.com.au

Dexion Hendra

Unit 6, 370 Nudgee Road
HENDRA QLD 4011

☎ 07 3332 0222

🌐 dexionhendra.com.au

Dexion Townsville

52 Keane Street
CURRAJONG QLD 4812

☎ 07 4779 9666

🌐 dexiontownsville.com.au

SA

Dexion Adelaide

Building 7, 938 South Road
EDWARDSTOWN SA 5039

☎ 08 8297 1255

🌐 dexionadelaide.com.au

TAS

Dexion Hobart

81 Sunderland Street
DERWENT PARK TAS 7009

☎ 03 6273 2022

🌐 dexionhobart.com.au

Dexion Launceston

6 Holbrook Street
INVERMAY TAS 7246

☎ 03 6331 3717

🌐 dexionlaunceston.com.au

Our Supply Centres

Australia (cont.)

VIC

Dexion Citiport

128 Walnut Street
CREMORNE VIC 3121

☎ 03 8795 5800

🌐 dexioncitiport.com.au

Dexion Dandenong

359 Frankston Dandenong Road
DANDENONG SOUTH VIC 3175

☎ 03 8795 5800

🌐 dexiondandenong.com.au

WA

Dexion Balcatta

28 Ledgar Road
BALCATTWA WA 6021

☎ 08 6241 2400

🌐 dexionbalcatta.com.au

Dexion Canning Vale

57 Catalano Circuit
CANNING VALE WA 6155

☎ 08 9455 7480

🌐 dexioncanningvale.com.au

New Zealand

Dexion Supply Centre

- Auckland

120 Carbine Road
Mount Wellington
Auckland 1060

☎ 09 259 8720

🌐 dexionscauckland.co.nz

Dexion Supply Centre

- Christchurch

24A Halwyn Drive
Hei Hei
Christchurch 8042

☎ 03 366 0571

Dexion Supply Centre

- Dunedin

330 King Edward Street
South Dunedin
Dunedin 9012

☎ 03 455 7177

🌐 dexionscdunedin.co.nz

Dexion Supply Centre

- Mt Maunganui

127 Newton Street
Mount Maunganui 3116

☎ 07 394 8686

Dexion Supply Centre -

North Shore

Unit 18, 43C Apollo Drive
Rosedale
Auckland 0632

☎ 09 930 8568

🌐 dscnorthhabour.co.nz

Dexion Supply Centre

- Waikato

22 Harwood Street
Hamilton Central
Hamilton 3204

☎ 07 839 5145

Dexion Supply Centre

- Wellington

2 Railway Avenue
Maidstone
Upper Hutt 5018

☎ 04 526 4218

🌐 dexionscwellington.co.nz

workshop

Shelving

Ultima Longspan 2 Shelving	44 – 45
Ultima Longspan 2 Rear Fit Shelving	46
Easyfit Boltless Wire Shelving	47
Speedlock Shelving	48 - 49
Ultima CI-80 Shelving	50 - 51

Workbenches

Medium Duty	52 – 53
Heavy Duty	54 – 55

Small Parts Storage

Binning Systems	56 – 59
Easyfit Wire Baskets	59

Ultima Longspan 2.



Your need:

A flexible shelving solution that can handle larger, heavier or awkwardly shaped items.

Our solution:

The Dexion Ultima Longspan 2 is Dexion's most popular hand-loaded shelving solution, it is engineered to be strong, durable and safe. The innovative new design leverages Dexion's smart beam connection to increase the performance and flexibility of the shelving system. Complete with an extensive range of accessories the Dexion Ultima Longspan 2 can be customised to suit your specific needs.

Vital statistics:

Shelving bay height	900, 1200, 1500, 1800, 2000, 2200, 2500, 3000mm
Shelving width	900, 1200, 1500, 1800, 2100, 2400mm
Shelving depth	400, 450, 500, 600, 760, 900, 1200mm
Shelf capacity	Up to 970kg based on Uniformly Distributed Load
Shelving bay capacity	Up to 3950kg based on Uniformly Distributed Load
Standard beam height	60mm
Beam pitch	50mm
Standard finish	Stone White (Beams), Anthracite (Uprights)
Accessories	Castors, hanging rails, timber, mesh or steel shelf infills, shelf dividers, shelf support bars

STORAGE *Tip*

Fastest moving products should be spread across different zones within a particular storage medium. This will help balance the workload and minimise congestion within a particular area.



Ultima Longspan 2 starter and extension bay with particle board shelves.



Ultima Longspan 2 with mesh shelves provides improved fire safety performance.



Dexion Longspan 2 can now go around corners to better utilise storage capacity and improve system flexibility.



The innovative new design leverages Dexion's smart beam connection.



Transform your standard shelving solution for retail and fashion with hang rails.



Add castor wheels to make your Longspan 2 shelving mobile.

Ultima Longspan 2 - Rear Fit.

Your need:

A flexible shelving solution to suit a heavy duty retail application.

Our solution:

The Dexion Ultima Longspan 2 – Rear Fit has no holes visible on the front face. The aesthetic is clean and uncluttered making it perfect for the commercial or retail environment while still engineered to be strong, durable and safe. The innovative new design leverages Dexion's smart beam connection to increase the performance and flexibility of the shelving system.

Vital statistics:	
Shelving bay height	1200, 1500, 1800, 2000, 2200mm
Shelving width	900, 1200, 1500, 1800, 2100, 2400mm
Shelving depth	400, 450, 500, 600mm
Shelf capacity	Up to 890kg based on Uniformly Distributed Load
Shelving bay capacity	Up to 3000kg based on Uniformly Distributed Load
Standard beam height	60mm
Beam pitch	50mm
Standard finish	Stone White (Beams), Anthracite (Uprights)



Longspan 2 Rear Fit Connection.



Longspan 2 Rear Fit Front Face.

EasyFit Boltless Wire Shelving.

Your need:

Sturdy wire shelving you can put together without tools, for wet or dry areas in a home, office, shop, restaurant or kitchen.

Our solution:

A boltless wire shelving system that's quick and simple to assemble. No bolts, so no tools. Easy to dismantle and reposition. Adjustable and adaptable, so it can change as your needs do. Available in Chrome or Stainless Steel to suit any storage application. Contemporary, durable and attractive style.

Vital statistics:

Shelving height	1000, 1200, 1500, 1800, 1900, 2000, 2100, 2200mm
Shelving width	610, 757, 910, 1060, 1215, 1370, 1518, 1822mm
Shelving depth	355, 460, 533, 610mm
Shelf carrying capacity	Up to 250kg*
Standard finish	Chrome & Stainless Steel 304 Chrome

*Uniformly Distributed Load. Shelf and bay capacities vary, contact your Dexion Supply Centre representative for specific maximum loads based on your configuration.



workshop products

STORAGE Tip

Add extra shelves for high density storage.



Speedlock® Shelving: Heavy Duty.

Your need:

Something that can handle longer, bulkier and very heavy items.
An economical solution that can be highly customised.

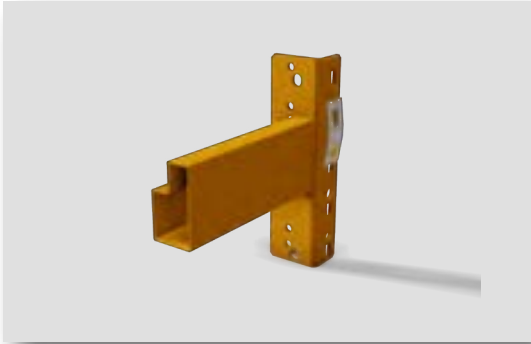
Our solution:

Speedlock shelving is made from the same beams and uprights we use for our pallet racking, so it is the ultimate in heavy duty shelving. There is a wide selection of beam sections and lengths which means it can suit almost any space. Its bolted construction means it is fully adjustable, and it can be fitted with timber or mesh shelves.

Vital statistics:

Shelving height	900, 1800, 2400, 3000mm
Beam length	
50 Open	1350, 1500, 1800, 2400, 2600, 2750mm
75 Open	1350, 1500, 1800, 2400, 2600, 2750, 3000mm
55 & 80 Step	1350, 1500, 1800, 2400, 2600, 2750mm
Shelving depth	600, 750, 840, 900, 1000, 1050, 1200, 1300, 1350, 1500mm
Shelf carrying capacity	Up to 1000kg*
Beam pitch	50mm
Standard colour	Orange (beams), Galvanised (uprights)

*Uniformly Distributed Load. Shelf, beam and bay capacities vary, contact your Dexion Supply Centre representative for specific maximum loads based on your configuration.



Step beam.



Open beam.



Box Beam.



Melamine shelves within Step beam. Recessed shelf is protected by the steel beam.



Board sits on top of the Open beam profile and is secured by retainers.



Board sits on top of the Box Beam profile and is secured by retainers.



Mesh shelves within Step beam.



Outdoor Speedlock with corrosive resistant safety clip.



Outdoor Speedlock with safe edge mesh shelf.



Outdoor Speedlock with heavy duty baseplate.

Ultima[®] CI-80 Shelving.

Your need:

A single-tier, hand-storage system for small parts of light to medium weight. Your business is growing and evolving, so you need a solution that can change with you.

Our solution:

Employing a modular system, Ultima CI-80 expands in any direction. A common frame panel makes sideways extension simple while units are made mobile with Compactus bases and runners. A wide range of accessories allow you to switch between front office and backroom applications.

Vital statistics:

Shelving height	1875, 2175, 2400mm
Shelving width	750, 900, 1050, 1200mm
Shelving depth	250, 300, 400, 450, 500, 600mm
Shelf carrying capacity	Up to 240kg*
Shelving bay capacity	Standard frames - Up to 1035kg* Reinforced frames - Up to 1700kg*
Shelf pitch	25mm
Standard colour	Stone White

*Uniformly Distributed Load. Shelf and bay capacities vary, contact your Dexion Supply Centre representative for specific maximum loads based on your configuration.



Add shelf supports for additional load carrying capacity.





Ultima CI-80 starter and extension bay with steel shelves. Shelf carrying capacity can be increased to 200kg UDL by adding shelf supports.



Ultima CI-80 starter bay with steel shelves. Shelf carrying capacity can be increased to 200kg UDL by adding shelf supports.





Workbench: Medium Duty.

Your need:

A workbench that is very flexible, can be easily configured to any length and is economical.

Our solution:

Ultima Longspan 2 benches give you the ultimate in flexibility. They can be configured to any length and are easy to put together. They are not too heavy, but still strong. They are cost effective and can also be accessorised with small parts bins and high density drawer systems.

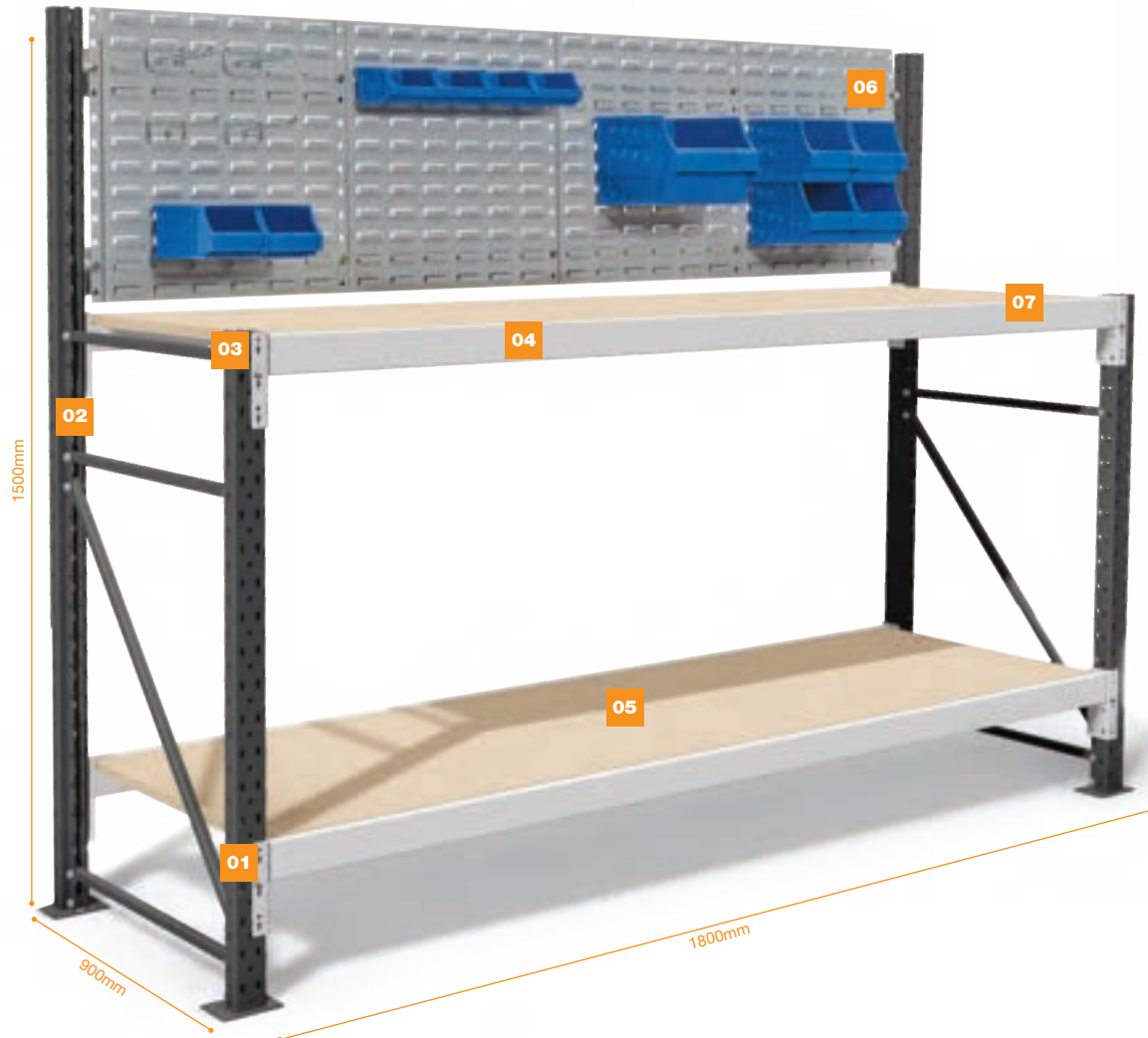
Vital statistics:

Height	Can be customised to suit any height
Width	900, 1200, 1800, 2100, 2400mm
Depth	400, 450, 500, 600, 760, 900, 1200mm
Beam height	75mm
Beam pitch	50mm
Standard colour	Stone White (beams), Anthracite (uprights)

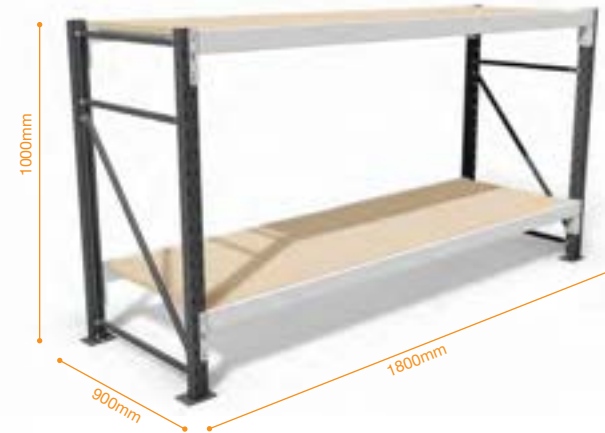
STORAGE *Tip*

For the ultimate workshop solution, integrate louvred panels and small parts bins (see opposite).

- 01** Safety lock ensures beams are not dislodged.
- 02** Bolted frames.
- 03** Clip in beams.
- 04** Range of tops available: particle board, melamine and stainless steel.
- 05** Undershef provides added stability and is easily adjusted at any height along the upright.
- 06** Incorporate louvred panels for the storage of small parts, using bins and hooks.
- 07** Work surface sits within the beam. Supports can be added to increase loaded carrying capacity of the top.



Ultima Longspan 2 workbench with particle board work surface and bottom shelf with louvred panel and bins.



Ultima Longspan 2 workbench with particle board work surface and bottom shelf.

workshop products



Workbench: Heavy Duty.

Your need:

A workbench that is tough and simple to put together.

Our solution:

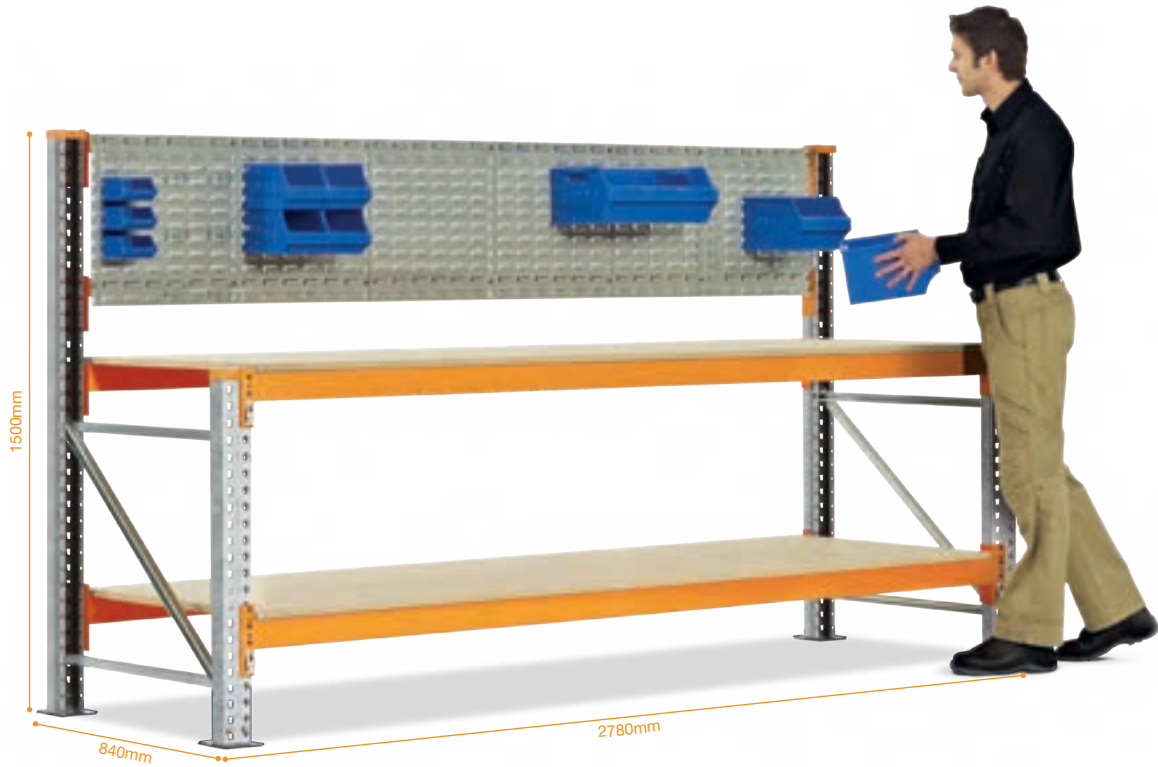
Speedlock benches are made from the same beams and uprights that we use for our pallet racking, so they are the strongest benches around. They can be easily assembled, and can be customised with the addition of a top shelf, or by adding maxi bins or high density drawer systems for small parts storage.

Vital statistics:

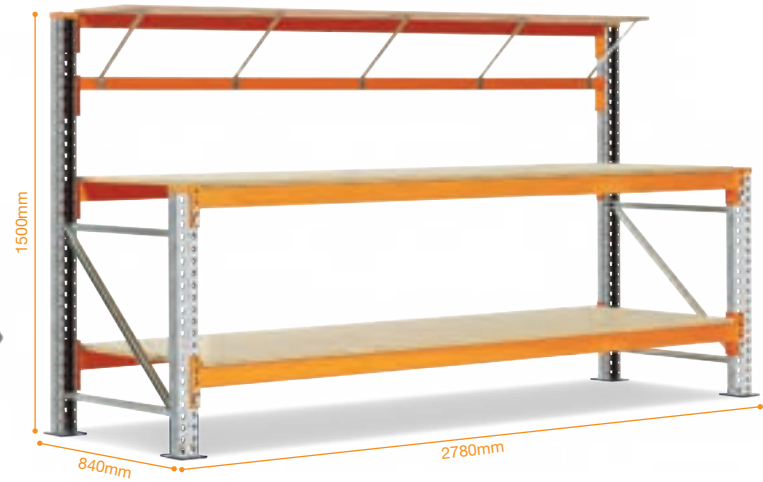
Height	900 standard, can be customised to suit any height
Width	2780mm
Depth	600, 750, 840, 900, 1000, 1050, 1200, 1300, 1350, 1500mm
Beam height	75mm
Beam pitch	50mm
Standard colour	Orange (beams), Galvanised (uprights)

STORAGE *Tip*

Wrap particle board work surface with sheet metal for an oil resistant surface.



Speedlock workbench. 75 Open beams with particle board work surface and bottom shelf with louvred panel and bins.
 Note: Flush fitting 75 Open beams fitted to work surface level only.



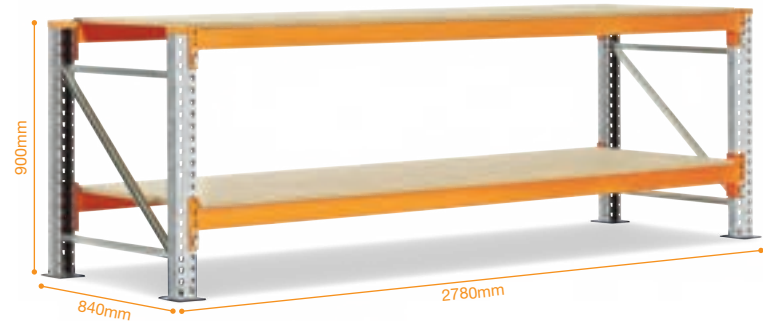
Speedlock workbench. 75 Open beams with particle board work surface and upper and bottom shelf.



Melamine work surface provides wipe clean top.



Work surface sits on top of the beam. Supports can be added to increase load carrying capacity of the work surface.



Speedlock workbench. 75 Open beams with particle board work surface and bottom shelf.

Small Parts Storage: Binning Systems.

Your need:

Small parts to be immediately accessible and highly ordered.

Our solution:

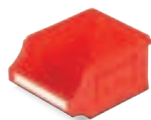
Dexion's range of shelf, hanging and stackable bins allow you to sort small parts any way you like. Our Maxi bins come in seven sizes and five different colours. They can be stacked, hung off louvred panels or incorporated into other Dexion storage systems. There are literally countless combinations.



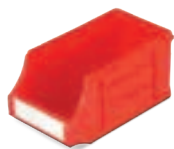
Louvred panel double sided with extension and maxi bins and hooks.



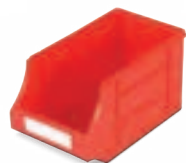
Single pronged, double pronged and closed loop steel hooks are great for hanging a variety of parts such as fan belts, gaskets, hoses and packaged items such as automotive parts.



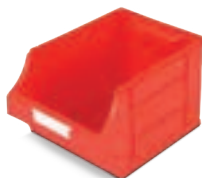
P5
100mm wide
120mm deep
60mm high
2kg max load



P10
100mm wide
178mm deep
85mm high
5kg max load



P20
135mm wide
225mm deep
125mm high
9kg max load



P30
205mm wide
280mm deep
165mm high
14kg max load



P40
410mm wide
280mm deep
165mm high
18kg max load



P60
410mm wide
457mm deep
216mm high
27kg max load



P45
180mm wide
440mm deep
145mm high
13kg max load

01 Smooth internal features with curved edges making bins easy to clean and provides quick and easy product picking.

02 Divider available for P30, P40, P45 and P60.

03 Unique rear recessed holding grip.

04 Deep rear lip to facilitate bin hanging on louvred panel.

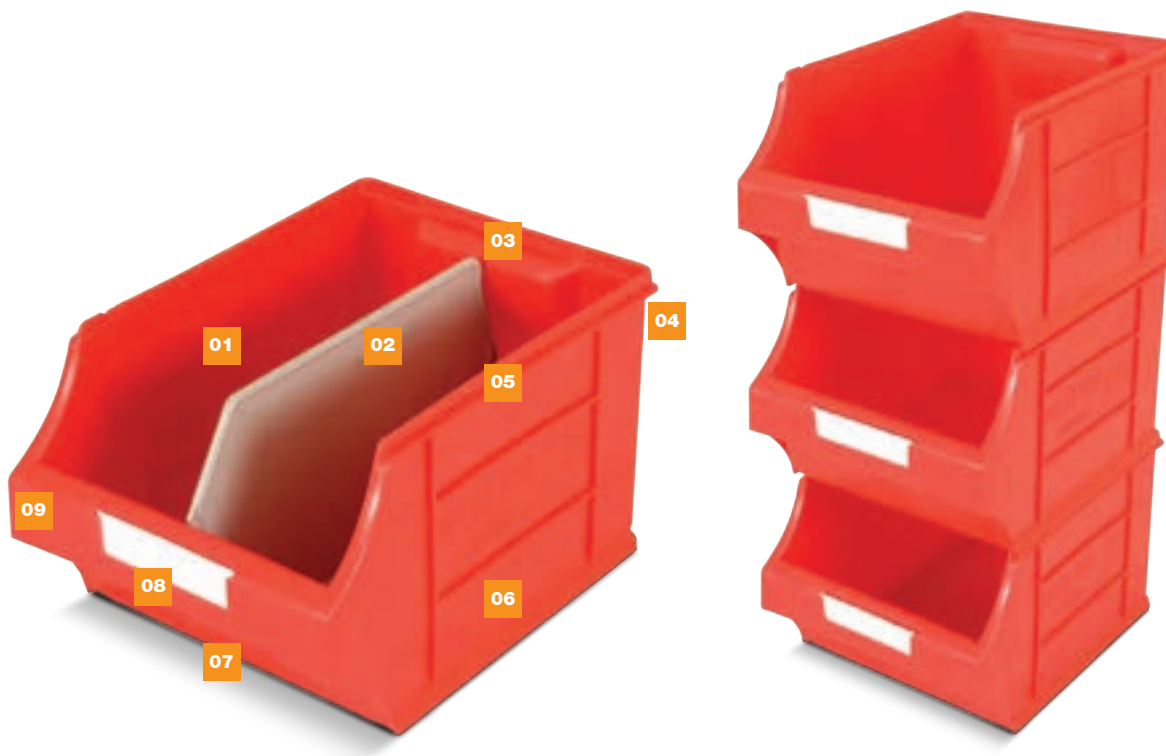
05 Uniquely moulded top rim to ensure secure stacking.

06 Reinforced moulding provides stacking strength.

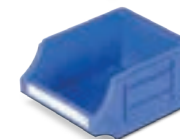
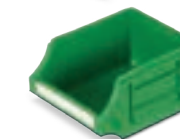
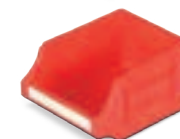
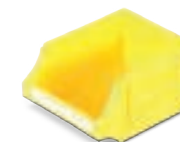
07 Wide base moulding to stack securely.

08 Wide identification label.

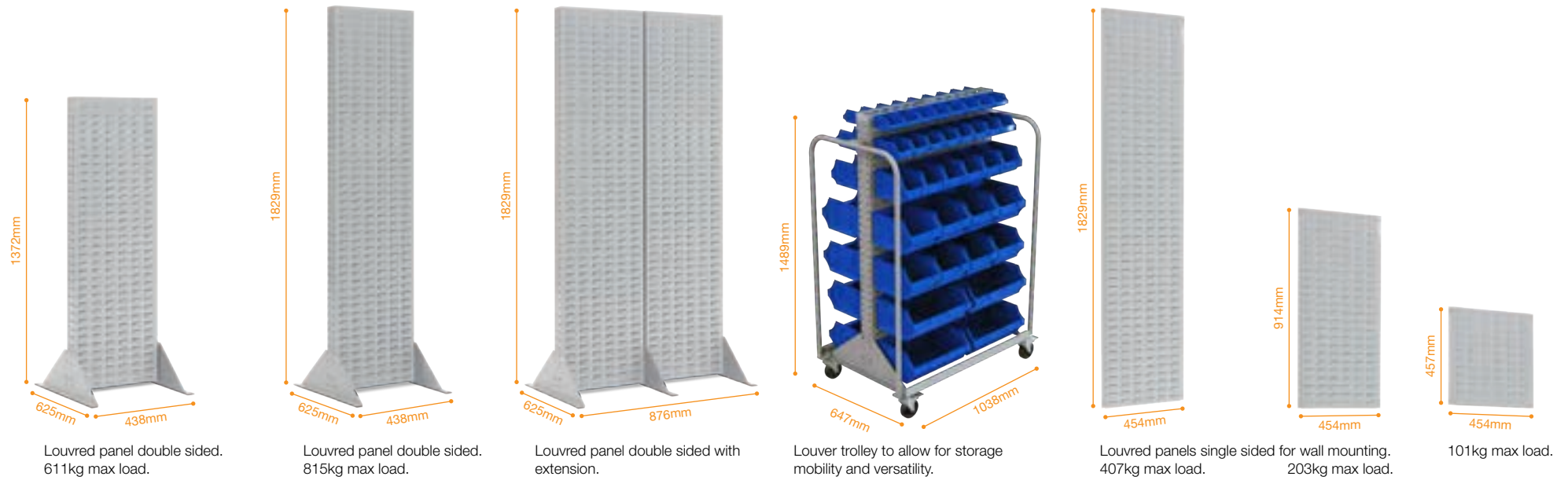
09 Made from high strength polypropylene that resists discolouration from oil and grease.



Bins can be stacked or hung on louvred panels.



Available in a range of colours to assist in more efficient picking.



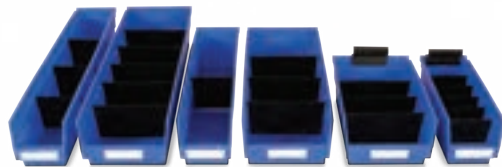
Number of bins or wire baskets per 457mm wide panel

		P5 Maxi bins / W5 Wire Baskets				P10 Maxi bins / W10 Wire Baskets				P20 Maxi bins / W20 Wire Baskets			P30 Maxi bins / W30 Wire Baskets		P40 Maxi bins / W40 Wire Baskets		P60 Maxi bins / W60 Wire Baskets	
Single sided louvre panel dimension	475mm	1	2	3	4	1	2	3	4	1	2	3	1	2	1	1		
		5	6	7	8	5	6	7	8	4	5	6	3	4	2	2		
		9	10	11	12	9	10	11	12	7	8	9	5	6	3	3		
		13	14	15	16	13	14	15	16	10	11	12	7	8	4	4		
	17	18	19	20	17	18	19	20	13	14	15	9	10	5	5			
	21	22	23	24	21	22	23	24	16	17	18	11	12	6	6			
	25	26	27	28	25	26	27	28	19	20	21	13	14	7	7			
	29	30	31	32	29	30	31	32	22	23	24	15	16	8	8			
	33	34	35	36	33	34	35	36	25	26	27	17	18	9	9			
	37	38	39	40	37	38	39	40	28	29	30	19	20	11	11			
	41	42	43	44	41	42	43	44	31	32	33	21	22	13	13			
	45	46	47	48	45	46	47	48	34	35	36	23	24	15	15			
	49	50	51	52	49	50	51	52	37	38	39	25	26	17	17			
	53	54	55	56	53	54	55	56	40	41	42	27	28	19	19			
	57	58	59	60	57	58	59	60	43	44	45	29	30	21	21			
	61	62	63	64	61	62	63	64	46	47	48	31	32	23	23			
	65	66	67	68	65	66	67	68	49	50	51	33	34	25	25			
	69	70	71	72	69	70	71	72	52	53	54	35	36	27	27			
73	74	75	76	73	74	75	76	55	56	57	37	38	29	29				
77	78	79	80	77	78	79	80	58	59	60	39	40	31	31				
81	82	83	84	81	82	83	84	61	62	63	41	42	33	33				
85	86	87	88	85	86	87	88	64	65	66	43	44	35	35				
89	90	91	92	89	90	91	92	67	68	69	45	46	37	37				
93	94	95	96	93	94	95	96	70	71	72	47	48	39	39				
	1829mm	97	98	99	100	97	98	99	100	73	74	75	49	50	41	41		
101		102	103	104	101	102	103	104	76	77	78	51	52	43	43			
105		106	107	108	105	106	107	108	79	80	81	53	54	45	45			
109		110	111	112	109	110	111	112	82	83	84	55	56	47	47			
113		114	115	116	113	114	115	116	85	86	87	57	58	49	49			
117		118	119	120	117	118	119	120	88	89	90	59	60	51	51			
121		122	123	124	121	122	123	124	91	92	93	61	62	53	53			
125		126	127	128	125	126	127	128	94	95	96	63	64	55	55			
	914mm	129	130	131	132	129	130	131	132	97	98	99	65	66	57	57		
133		134	135	136	133	134	135	136	100	101	102	67	68	59	59			
137		138	139	140	137	138	139	140	103	104	105	69	70	61	61			
141		142	143	144	141	142	143	144	106	107	108	71	72	63	63			
145		146	147	148	145	146	147	148	109	110	111	73	74	65	65			
149		150	151	152	149	150	151	152	112	113	114	75	76	67	67			
153		154	155	156	153	154	155	156	115	116	117	77	78	69	69			
157		158	159	160	157	158	159	160	118	119	120	79	80	71	71			
	475mm	161	162	163	164	161	162	163	164	121	122	123	81	82	73	73		
165		166	167	168	165	166	167	168	124	125	126	83	84	75	75			
169		170	171	172	169	170	171	172	127	128	129	85	86	77	77			
173		174	175	176	173	174	175	176	130	131	132	87	88	79	79			
177		178	179	180	177	178	179	180	133	134	135	89	90	81	81			
181		182	183	184	181	182	183	184	136	137	138	91	92	83	83			
185		186	187	188	185	186	187	188	139	140	141	93	94	85	85			
189		190	191	192	189	190	191	192	142	143	144	95	96	87	87			
	1829mm	193	194	195	196	193	194	195	196	145	146	147	97	98	89	89		
197		198	199	200	197	198	199	200	148	149	150	99	100	91	91			
201		202	203	204	201	202	203	204	151	152	153	101	102	93	93			
205		206	207	208	205	206	207	208	154	155	156	103	104	95	95			
209		210	211	212	209	210	211	212	157	158	159	105	106	97	97			
213		214	215	216	213	214	215	216	160	161	162	107	108	99	99			
217		218	219	220	217	218	219	220	163	164	165	109	110	101	101			
221		222	223	224	221	222	223	224	166	167	168	111	112	103	103			

- 01 Rear identification label for bin divisions.
- 02 Raised lug acts as a stop on shelving.
- 03 Deep rear lip to hang on louvred panel.
- 04 Front to back divider slots.
- 05 Wide identification label.
- 06 Bin can accommodate dividers with label holders.
- 07 Reinforced moulding provides stacking strength.



- 01 Durable polypropylene ensures bin is waterproof and unaffected by grease.
- 02 Wide hopper front allows easy access and increased visibility.
- 03 Create compartments with dividers*.
- 04 Neat nesting capability.
- 05 Divider slots.
- 06 Built in handle grip.
- 07 Label holder identifies contents.



Shelf bin range						
Width (mm)	105	168	105	168	168	105
Depth (mm)	600	600	445	445	295	295
Height (mm)	102	102	102	102	102	102

*Dividers sold separately.

Easyfit® Baskets & Louvred Panel.



Your need:

To store sterile medical supplies in a smart system which minimizes dust or bacteria being harboured. A solution combining baskets with small mesh apertures to prevent items falling through and optional louvred panels for convenient wall mounting.

Our solution:

The EasyFit® Wire Baskets are a range of quality baskets which fit onto the Dexion Louvred Panel. The wire basket design greatly enhances the ability to effectively store medical supplies whilst limiting the surface area available for dust and bacteria to accumulate. Each basket has a double wire on the top edge to ensure there are no sharp edges and can easily be removed from the panel for restocking or relocation of stored items. Baskets can be fitted to EasyFit Wire Louvred Panels or standard Louvred Panels.

Vital statistics:

Dimensions (matches Maxi-Bin Dimensions)

W5	108w X 113d X 60h mm
W10	108w X 171d X 85h mm
W20	143w X 218d X 125h mm
W30	210w X 273d X 165h mm
W40	418w X 273d X 165h mm
W60	418w X 450d X 215h mm
WP18 (Louvred Panel)	457w x 457h mm
WP36 (Louvred Panel)	457w x 914h mm
WP72 (Louvred Panel)	457w x 1829h mm
Finishes	Chrome, Stainless steel 304



**For your nearest
Dexion Supply Centre, please call:**

**Australia 1300 339 466 or visit
www.dexion.com.au**

**Asia +603 5520 6000
www.dexion.biz**

**New Zealand 0800 339 466
www.dexion.co.nz**

Publisher: Dexion (Australia) Pty Limited, ABN 83 000 083 956

Copyright: All material in this publication is copyright to the publisher. No material may be reproduced without the express permission of the publisher.

Notice: Whilst the utmost care is taken to ensure the accuracy of the information contained herein, it is provided with the understanding that Dexion shall under no circumstances be liable for any injuries, expenses or other losses which may in some way be attributable to the use or adoption of products, services, information, data and/or design details listed. All dimensions indicated are nominal only. Dexion reserves the right to alter or amend without prior notice details specified within.

Products: Products available while stocks last. Products may vary at individual outlets. Unforeseen supply problems or unexpected demand may occasionally result in stock being unavailable.

Not all products advertised are displayed in all outlets. Accessories shown in the photographs are not included. Delivery, installation and handling fees will apply.

Dexion®, Circle with tick logo device®, Compactus®, Keylock®, Marlbro®, Ultima®, Speedlock®, EasyFit®, Precision®, are registered trademarks of Dexion (Australia) Pty Limited. Freetrack® and Mekdrive® are registered trademarks of Glidestore Freetrack Pty Ltd.